



FALDIVIA®
SPEED FOLDING GATE
Installation instructions

Adjustment history

Version	Date	Description
1.0	04/06/2018	Original version

This document contains installation instructions for installers.

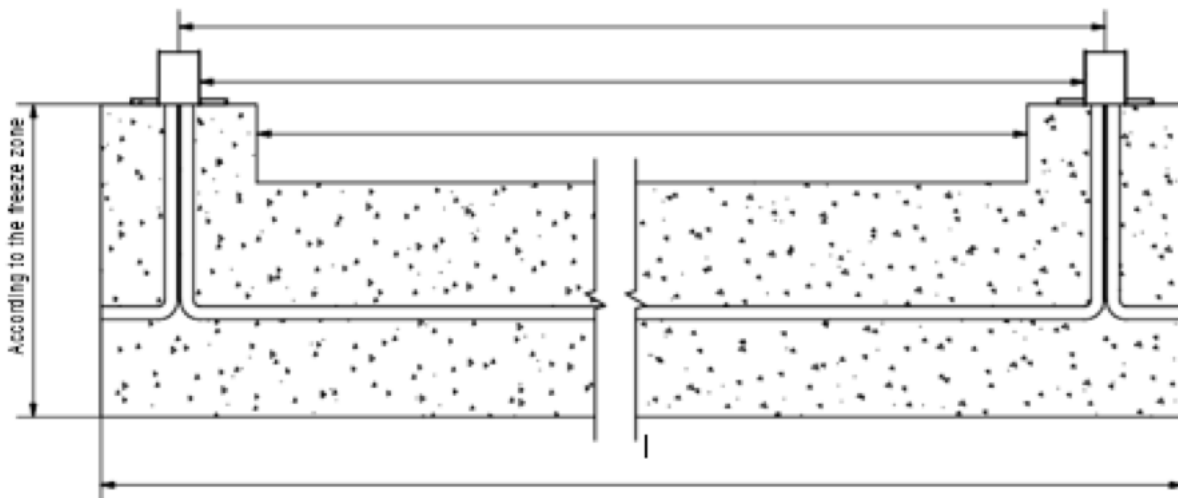
1. Preparation of the foundations

Before starting excavations for the foundations, the soil underneath the gate must be levelled. Installation on a slope is not allowed without written permission from the manufacturer. All foundations must be at the same level, which must be marked.

In order to prepare the excavations properly, the wing axis must be located and marked.

Standard foundation dimensions for each gate type are provided in the drawing. Drawings can be made available by the manufacturer on request.

Bear in mind that the suggested foundation dimensions may vary depending on the soil type or class and the frost line.



Voor automatische en handbediende poorten adviseren we om kunststof kabelbuizen met een diameter van 50 mm onder de posts te installeren. For automatic and manual gates it is advised to install plastic cable conduits with a diameter of 50 mm underneath the posts.

IMPORTANT!

The cable conduit must run straight from post 1 to post 2, as the supplied connection cable for the motor and the photocells has a limited length.

If this is not possible, the cable must be made specifically for the customer. This should be done before the installation as it is difficult to install the cable once the posts have been placed.

If this is the case, please ensure that the cable is long enough to reach the junction boxes in the posts.

The concrete must have hardened completely before installing the gate.

2. Unloading and lifting the gate

In order to ensure that the gate components are lifted in a safe way without being damaged, suitable lifting equipment should be used. In this context, the weight of the gate should be taken into account.

The gate is transported in two parts (post 1 with wing & post 2 with wing) on a special transport frame, and it is important to be careful when taking the parts out of the frame to prevent damage.



3. Fixing the posts on the foundations

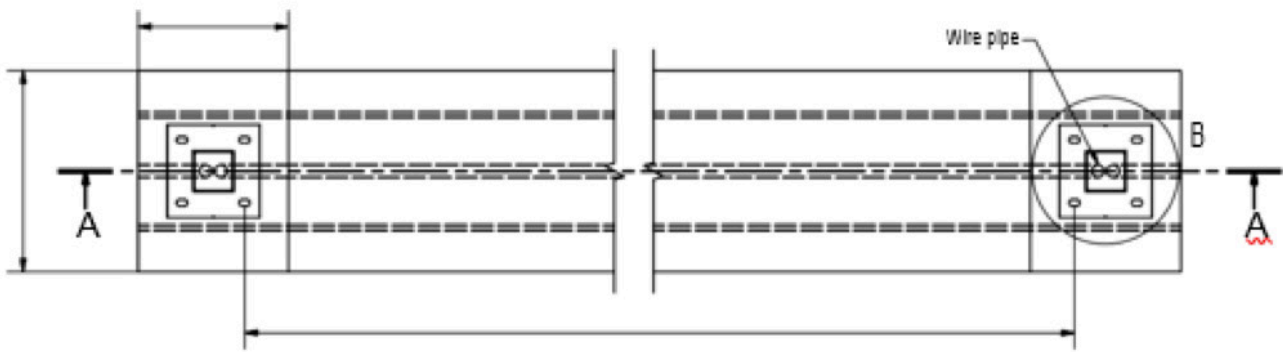
For the positioning of the posts, please check the drawing of the gate foundations.

First check that both foundations have the same height. If there is a difference, this must be taken into account when adjusting the height.

The distance between the posts (clear width) is important to make sure the wings can be closed completely. The distance between both wings, when they are closed, is 142 mm (this is measured at the top and at the bottom).

Use the drilling templates that are supplied with the gate. Place these on both foundations and pay attention to the distance between both posts (see drawing). Use a piece of string to make sure the posts are parallel to each other and to the street **(use the V cuts in the drilling template)**.

Hold the drilling templates and drill the holes. Normally 300 mm deep in the concrete with 100 mm above the surface. This could be different when the foundations are not the same height and one post needs to be placed higher up.



1. Attach the anchors with special glue and check that the template fits over them (otherwise the base plate of the post will not fit).
2. Allow the glue to dry well before placing the post.
3. Adjust the nuts and washers, paying attention to the required height of the post, taking into account ground clearance (adjust using a spirit level).
4. If the foundations did not have the same height (measured at the beginning), add the difference so that the other post reaches the same height.
5. As described in section 2, you must first lift the post out of the transport frame, without the electrical cabinet, and place it on the anchor bolts (be careful not to damage the photocells or other parts).
6. Do not forget to pull the connection cable into the post before placing it on the anchors.
7. Fit the nuts and washers. Remove the lifting equipment and adjust the post using a spirit level so that it is perfectly vertical in both directions.
8. Repeat this step for the second post.
9. Here, pull the power cable into the post together with the connection cable before placing it on the anchors.
10. Before tightening the anchors, check the distance between the posts.
11. Remove the wing lock screws from the motor arms and close the gate manually.
12. If all measurements were correct, the gate should open and close correctly.

The electrical connections are described in Drive unit and electrical connections.



Betafence Belgium NV

Blokkestraat 34b
8850 Zwevegem
Belgium

www.betafence.com